

STATE OF LOUISIANA

PARISH OF WASHINGTON

**WASHINGTON PARISH COUNCIL**

**ORDINANCE No. 12-566**

Introduced on July 9, 2012

Introduced by Aubrey Posey

Public hearing held on July 23, 2012

**AN ORDINANCE TO REVISE WASHINGTON PARISH  
RECREATION DISTRICTS LINES  
BY AMENDING ORDINANCES No. 09-488 and 10-525**

**WHEREAS**, Recreation Districts No. 1, 2 and 3 of Washington Parish, Louisiana were created by Ordinance No. 09-488 and amended by Ordinance No. 10-525; and

**WHEREAS**, it has been discovered that the existing boundaries contained an error and, further, administratively it would be more practical for the boundary line running in a North-South direction to coincide with existing district lines;

**BE IT ORDAINED**, that the Washington Parish Council hereby amends Ordinance No. 09-488 entitled "An Ordinance Creating Recreational Districts for the Parish of Washington" and amends Ordinance No. 10-525 entitled "An Ordinance to Extend and Revise Washington Parish Recreation Districts Lines by Amending Ordinance No. 09-448", as follows:

- A. Section 1.1 is hereby amended to the extent that Recreation District No. 1 of Washington Parish, Louisiana shall consist of all of that territory described as follows, to-wit:

Beginning at a point where the range line between Range 12 East and Range 13 East intersects the line between Washington Parish, State of Louisiana and the State of Mississippi; thence South along said range line to a point where said range line intersects Pushepatappa Creek; thence Southeasterly along the meanderings of Pushepatappa Creek to the Southwest corner of Section 21, Township 1 South, Range 13 East; thence East along the section line to the Southeast corner of said Section; thence South to the Southeast corner of Section 28, Township 1 South, Range 13 East; thence West along section line to the Southwest corner of said section; thence South along section line to the Southeast corner of Section 8, Township 2 South, Range 13 East; thence West along section line to the range line between Range 12 East and Range 13 East; thence South along said range line to a point where it intersects the line between Washington Parish and St.

Tammany Parish; thence in a westerly direction along said Parish line to the Tchefuncte River and the Tangipahoa Parish Line; thence in a northerly direction along said Parish line to a point where the Washington and Tangipahoa Parish lines intersects the Mississippi State Line; thence East along the Louisiana and Mississippi State Line to the POINT OF BEGINNING.

- B. Section 2.1 is hereby amended to the extent that Recreation District No. 2 of Washington Parish, Louisiana shall consist of all of that territory being all of that portion of Washington Parish, Louisiana located North of the Township line between Township 2 South and Township 3 South and East of a line described as follows, to-wit:

Beginning at a point where the range line between Range 12 East and Range 13 East intersects the line between Washington Parish, State of Louisiana and the State of Mississippi; thence South along said range line to a point where said range line intersects Pushepatappa Creek; thence Southeasterly along the meanderings of Pushepatappa Creek to the Southwest corner of Section 21, Township 1 South, Range 13 East; thence East along the section line to the Southeast corner of said Section; thence South to the Southeast corner of Section 28, Township 1 South, Range 13 East; thence West along section line to the Southwest corner of said section; thence South along section line to the Southeast corner of Section 8, Township 2 South, Range 13 East; thence West along section line to the range line between Range 12 East and Range 13 East; thence South along said range line to a point where it intersects the township line between Township 2 South and Township 3 South, the POINT OF BEGINNING.

- C. Section 3.1 is hereby amended to the extent that Recreation District No. 3 of Washington Parish, Louisiana shall consist of all of that territory being all of that portion of Washington Parish, Louisiana located South of the Township line between Township 2 South and Township 3 South and East of a line described as follows, to-wit:

Begin at the intersection of the line between Township 2 South and Township 3 South with the range line between Range 12 East and Range 13 East; thence South along the range line to a point where it intersects the line between Washington Parish and St. Tammany Parish, the POINT OF ENDING.

**BE IT FURTHER ORDAINED**, that the boundary lines of the Recreation Districts are as shown on the map attached to this Ordinance and incorporated herein.

**BE IT FURTHER ORDAINED**, that all other Sections of Ordinance No. 09-488 remain in full force and effect.

**BE IT FURTHER ORDAINED**, that to the extent that any prior ordinances may be contradictory to the provisions of this ordinance, the such prior ordinances are repealed.

**BE IT FURTHER ORDAINED**, that as authorized by Sections 2-13(C) of the Washington Parish Home Rule Charter that this ordinance shall be published in summary by title.

**BE IT FURTHER ORDAINED**, that this Ordinance shall become effective immediately upon the signatures of the Parish Council Chairman and the Parish President.

The above and foregoing having been submitted to a vote, the vote thereupon resulted as follows:

YEAS: (7) Johnson, Thomas, Route, Posey, Wheat, Fussell and Nassauer

NAYS: (0)

ABSENT: (0)

ABSTAIN: (0)

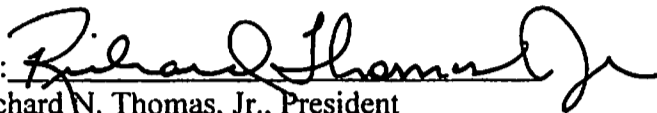
The ordinance was declared adopted on the 23rd day of July, 2012.

WASHINGTON PARISH COUNCIL

By Greg Route  
Greg Route, Chairman

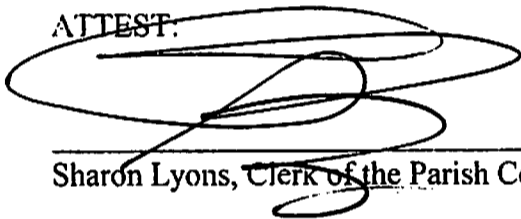
Delivered to the Parish President on the 24th day of  
July, 2012.

WASHINGTON PARISH GOVERNMENT

By:   
Richard N. Thomas, Jr., President

Returned to the Clerk of the Parish Council on the 24th day of  
July, 2012.

ATTEST:



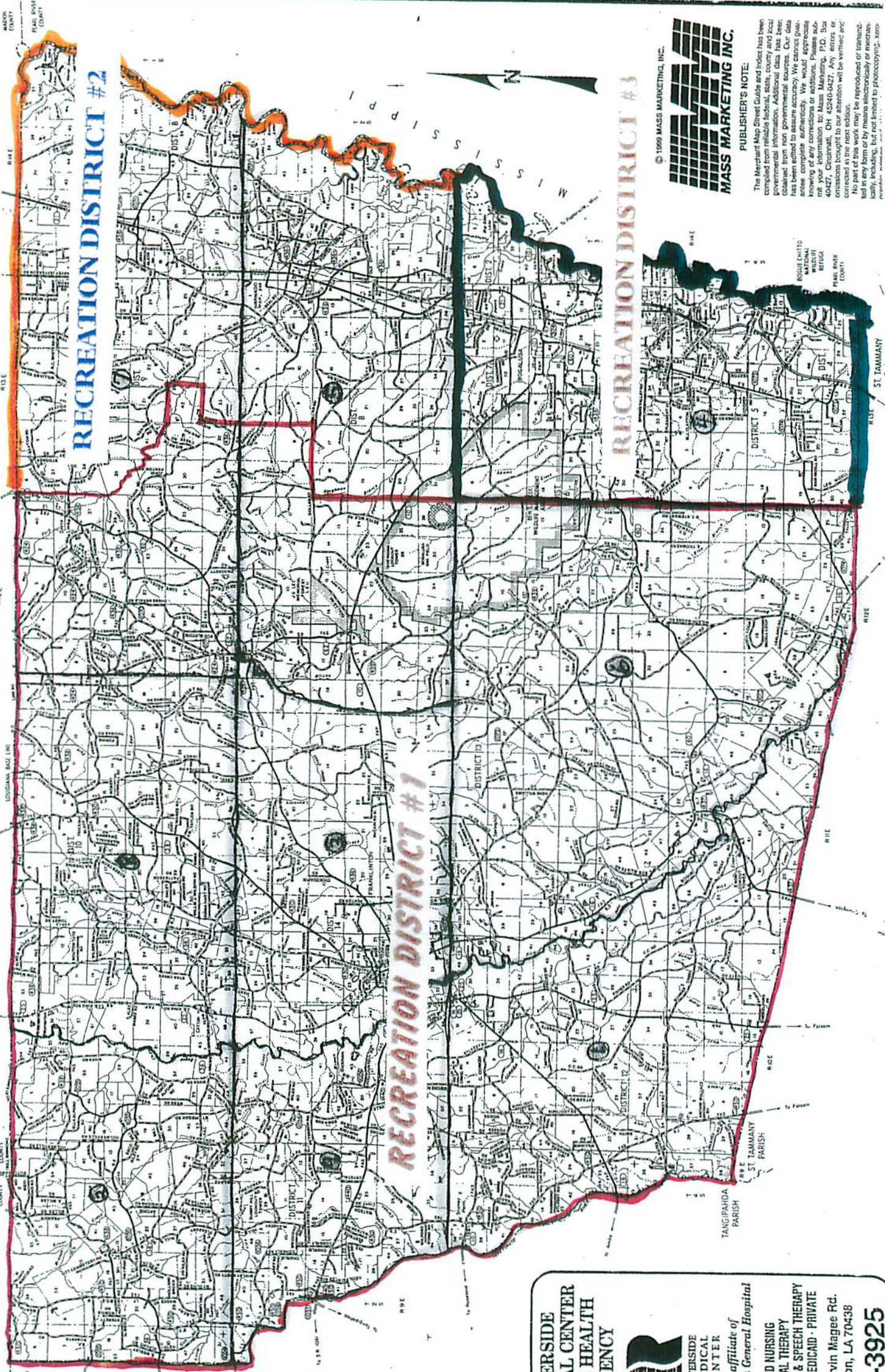
Sharon Lyons, Clerk of the Parish Council

WARD MAP

RECREATION DISTRICT #2

RECREATION DISTRICT #1

RECREATION DISTRICT #3



© 1999 MASS MARKETING, INC.

PUBLISHER'S NOTE:

The Mercator Map Street Guide and Index has been compiled from reliable federal, state, county and local governmental information. Additional data has been obtained from other governmental sources. Our data is believed to be accurate. We cannot assume responsibility for any errors or omissions. We would appreciate your information to: Mass Marketing, P.O. Box 40427, Cincinnati, OH 45240-0427. Any errors or omissions brought to our attention will be verified and corrected in the next edition. No part of this work may be reproduced or transmitted in any form or by means electronically or mechanically, including, but not limited to photocopying, xeroxing, scanning, or otherwise.

RIVERSIDE  
MEDICAL CENTER  
HOME HEALTH  
AGENCY



RIVERSIDE  
MEDICAL  
CENTER

... an affiliate of  
East-Jefferson General Hospital

SKILLED NURSING  
PHYSICAL THERAPY  
OCCUPATIONAL & SPEECH THERAPY  
MEDICARE - MEDICAID - PRIVATE

2004 J. Marvin Magee Rd.  
Franklinton, LA 70438

839-3925